



TOYOTA

ALWAYS A
BETTER WAY

How to tether Wi-Fi



Connected
Services

Set up Wi-Fi Connectivity: Overview

Step 1 – Click on “Setup”.

Step 2 – Click on the drop down arrow.

Step 3 – Click on “Wi-Fi” and turn on “Wi-Fi power”.

Step 4 – Ensure hotspot is enabled on your phone.

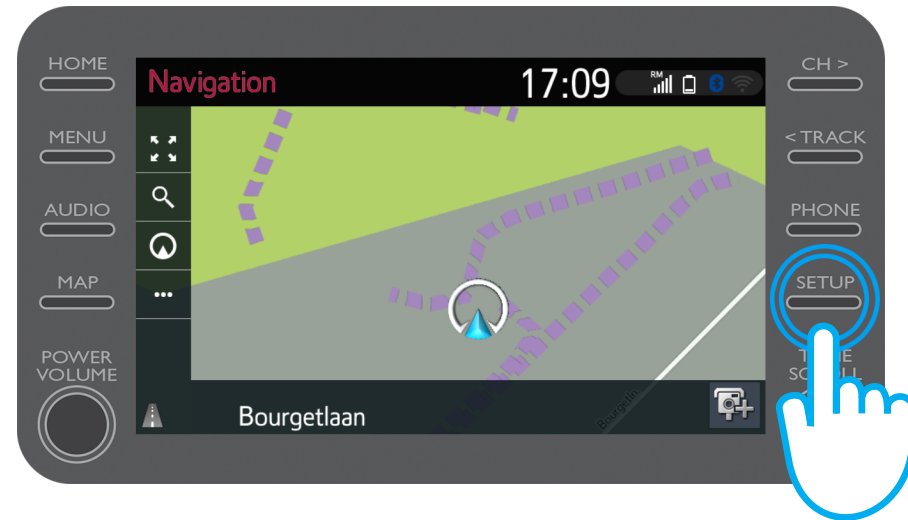
Step 5 – Select your network.

Step 6 – Enter the network password and select “OK”.

Step 7 – The multimedia system has successfully connected to the hotspot.

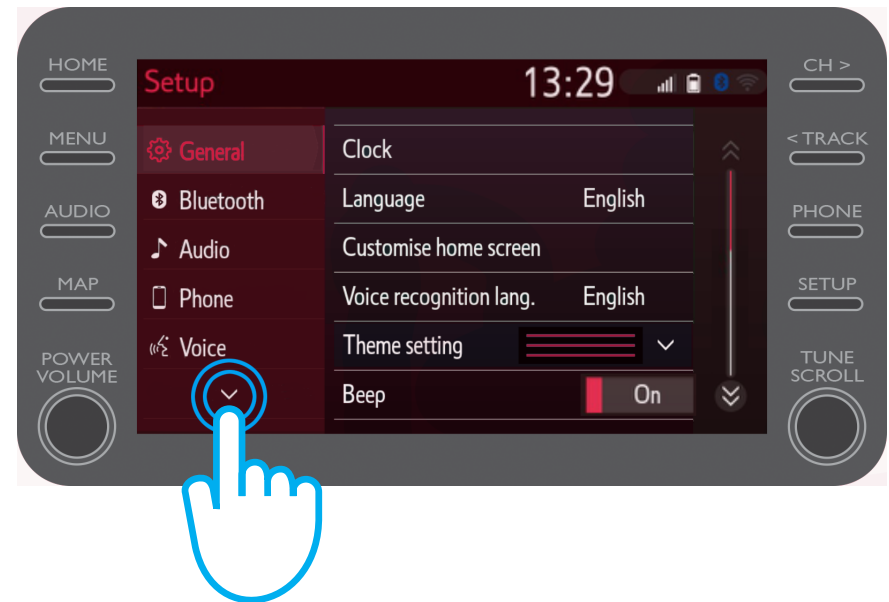
Set up Wi-Fi Connectivity: Step 1

Click on “Setup”.



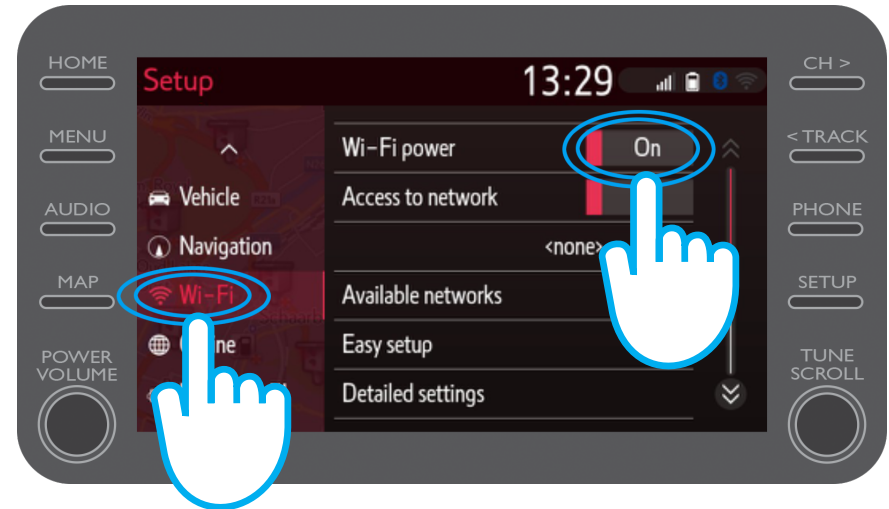
Set up Wi-Fi Connectivity: Step 2

Click on the drop-down arrow.



Set up Wi-Fi Connectivity: Step 3

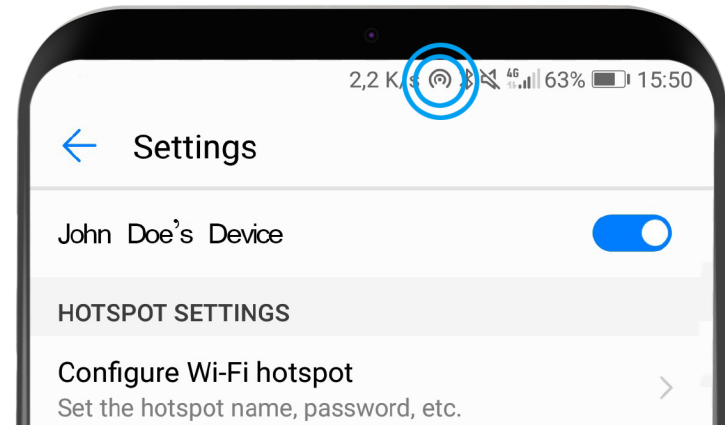
Click on “Wi-Fi” and turn on “Wi-Fi power”.



Set up Wi-Fi Connectivity: Step 4

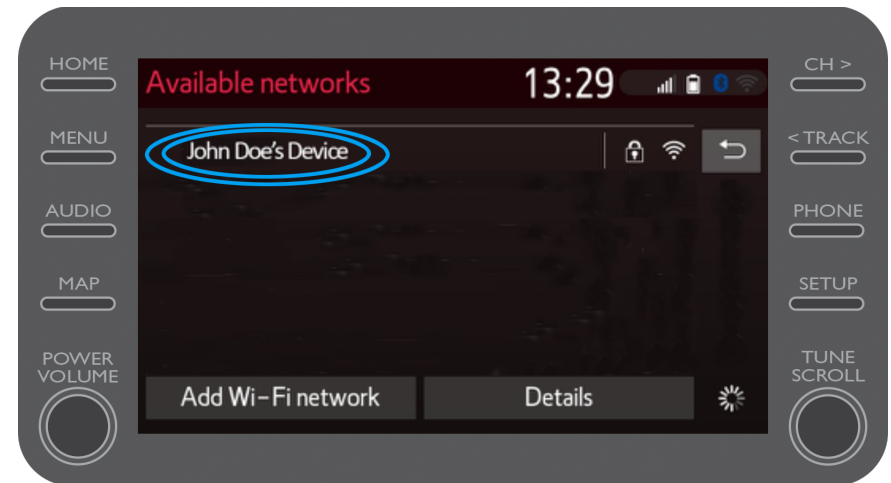
Ensure hotspot is enabled on your phone.

This symbol will be visible.



Set up Wi-Fi Connectivity: Step 5

Select your network.



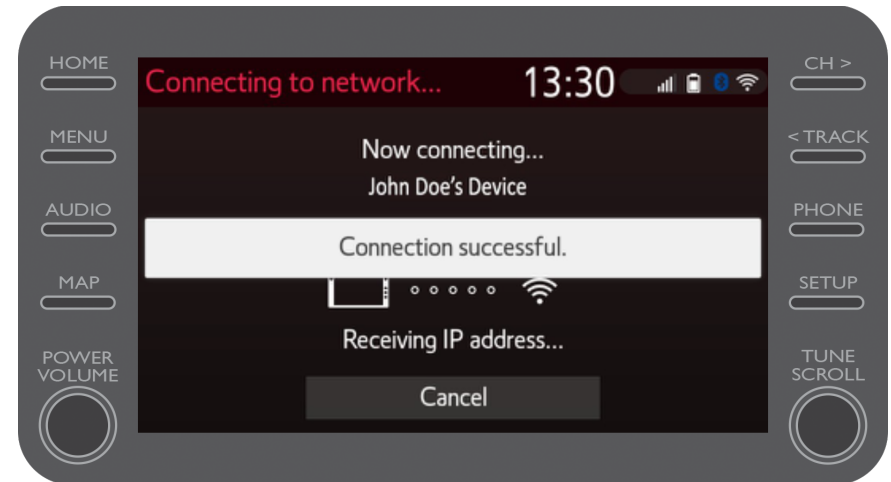
Set up Wi-Fi Connectivity: Step 6

Enter the network password and select “OK”.



Set up Wi-Fi Connectivity: Step 7

The multimedia system has successfully connected to the hotspot.



MyT | Multimedia

Life happens when you connect

MyT | Connected
Services