

LC

 LEXUS
EXPERIENCE AMAZING

LC CONVERTIBLE





PREPARE TO SELECT YOUR LEXUS

In this brochure we invite you to prepare for the excitement of choosing your new Lexus LC Convertible. Outside it artfully blends the LC coupé's iconic roofline with the character of a convertible, achieving beauty with the soft top open or closed.

Having selected your favourite LC Convertible colour, wheels and interior trim, inside you'll discover a cabin that exudes luxury and sophistication: the 10.3-inch multimedia display is easy to read and intuitive to control using the Touch Pad device and offers access to your smartphone's apps via Apple CarPlay® or Android Auto®. Exquisite leather stitching and 'Takumi'-crafted materials create an ambience of modern elegance and refinement.

Importantly, for you and your passengers, all LC Convertible models are equipped with our Lexus Safety System +. This includes a Pre-Collision System with pedestrian detection; Lane Keeping Assist with Sway Warning function to help you stay on course; Automatic High Beam for enhanced vision at night; and Dynamic Radar Cruise Control, which regulates your speed to that of the vehicle in front.



01. MODEL

Pages 04-05

02. FEATURES

Pages 06-07



03. TECHNOLOGY

Pages 08-12

04. ACCESSORIES

Page 13

05. COLOURS

Pages 14-17



06. EQUIPMENT

Pages 18-21

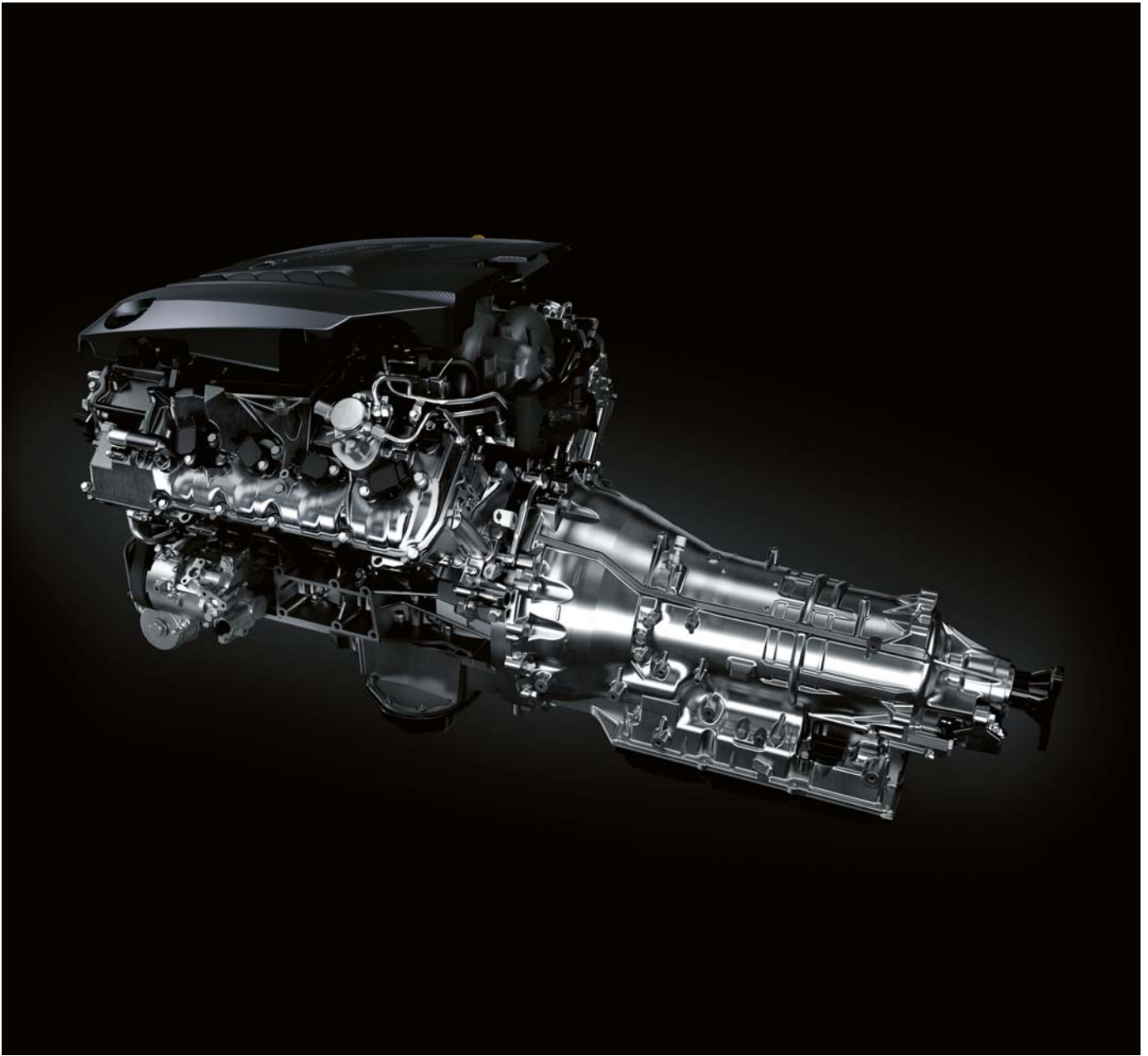
07. TECHNICAL DATA

Pages 22-23

THE LC CONVERTIBLE

The LC Convertible is powered by a high-revving 5.0-litre petrol engine that delivers 464 DIN hp / 341 kW to the rear wheels. Developed at motorsport events like the Nürburgring 24-hour Race and Pikes Peak Hill Climb, this hand-built engine is perfectly matched to the 10-speed automatic transmission to offer incredible acceleration and an awesome V8 sound.





V8 ENGINE

Providing rapid acceleration combined with the stunning responsiveness of a normally aspirated engine, the LC Convertible's V8 delivers maximum torque of 530 Nm and reaches 100 km/h in 5.0 seconds. Engineered for durability yet with a lightweight construction, forged connecting rods and titanium valves allow agility at high revs. For an incredible effect, the LC Convertible's front air intake is fitted with an acoustic sound generator. This transmits sensual engine intake sounds through the dash panel to make the V8 engine more palpable when the roof is down, while an exhaust valve enhances the powerful engine sound. And for cleaner exhaust emissions the LC Convertible is fitted with a new Gasoline Particulate Filter.

10-SPEED TRANSMISSION

The LC Convertible's 10-speed automatic transmission provides astonishingly quick gear shifts. For a crisp, smooth and rhythmic drive, it uses AI-SHIFT control that actually selects the optimum gear according the driver's preferences and intentions, based not just on vehicle speed, but on past driving style.



01



02

01. 20" CAST ALLOY WHEELS

Not available in Northern Europe

02. 21" FORGED ALLOY WHEELS

Forged and polished 5-twin-spoke lightweight wheels for superior handling.
Front: 21-inch x 8.5/2J, inset 25
Rear: 21-inch x 9.5/2J, inset 25

03. LED HEADLIGHTS

This ultra-compact LED triple-projector headlight unit was specially developed to allow an exceptionally short front overhang on the LC Convertible, crucial for high-speed handling.



03

04. LED HOLOGRAPHIC REAR LIGHTS

Inspired by the afterburners of jet fighter aircraft, eye-catching taillights with a sculpted metallic frame project an infinite Lexus 'L' motif. Closer inspection reveals the boot lock integrated seamlessly in the rear light moulding.

05. SOFT TOP ROOF

Graceful in operation, durable to use, Lexus engineers tested our first-ever soft top roof to the limit, finding that it would last through around 18,000 open and closing cycles before the first minor problem occurred. Fifteen seconds is all it takes to raise or lower the 4-layer (1. acrylic outer cloth with fluorocarbon treatment; 2. insulating rubber layer; 3. PET inner fabric layer; 4. sound absorbing material) roof, and this can be done even when the car is on the move - at speeds up to 50 km/h.



04



05

06. FLUSH DOOR HANDLES

The LC Convertible's flush door handles realise a smooth surface across the car body. As well as being beautiful, their aerodynamic shape contributes to increased driving refinement and performance.

07. REAR SPOILER

Developed for the new LC Convertible, this rear spoiler has been extended laterally, accentuating the wide stance of the new convertible.



06



07

01. DRIVER-FOCUSED COCKPIT

To reduce eye movement and potential distraction, all important instruments and displays are positioned close to your view of the road ahead. Controls you use frequently, like Drive Mode Select, are concentrated around the steering wheel.



01

02. ANALOGUE CLOCK WITH 'L' MOTIF

Discover the discreet Lexus 'L' motif in the face of the analogue clock and the tactile raised surfaces of the air vent controls.



02

03. ROOF SWITCH

Creating a sense of anticipation each time you lower or raise the soft top, the LC Convertible's open/close roof switch is intentionally located under the palm rest.



03

04. CLIMATE CONCIERGE / NANOE® TECHNOLOGY

Climate Concierge has been adapted for the LC Convertible to orchestrate the air conditioning, seat and neck heaters and heated steering wheel. True to our 'Omotenashi' hospitality ethos, airflow has been increased slightly to warm key areas, such as the back of your hands on the wheel. Additionally, pioneering nanoe® technology releases negatively charged particles into the cabin to purify the air and effectively deodorize seats. They also have a pleasant, moisturising effect on your skin and hair.



04

05. ADJUSTABLE NECK HEATERS

Adjustable heaters built into the front headrests direct air onto your neck, instantly evoking a warm, soothing sensation. Designed to suit people of varying heights, they activate automatically, or manually via three heat settings.



05

06. GEOMETRIC DOOR TRIM

The exclusive geometric effect on the door panels and the arrangement of the perforations in the leather seat upholstery are further hallmarks of the attention to detail invested in this outstanding luxury car.



06

07. MACHINED PEDALS

A machined aluminium accelerator pedal, brake pedal and large footrest with an anodized aluminium finish deliver true sports performance. The surface of the brake pedal has been optimised for maximum feel.



07

08. LEATHER SEATS

Beautifully stitched leather seats offer the best possible combination of support and comfort. The LC Convertible Chief Engineer was directly involved in developing this new design that was selected from 50 other seat designs.



08

09. HEATED LEATHER STEERING WHEEL

Heated for colder driving conditions, the three-spoke steering wheel is covered in leather and fits snugly and comfortably in your hands. Integrated switches control audio, telephone, multi-information display, Dynamic Radar Cruise Control and Lane Keeping Assist.



09



01

01. MULTI-INFORMATION DISPLAY

To keep you up-to-date with all key driving data - such as safety warnings and navigation guidance - a colour multi-information display is integrated within the central instruments. And because this is a convertible, an anti-reflection coating and bevelled acrylic frame has been added to the instrument display.



02

02. EXTRA-WIDE COLOUR HEAD-UP DISPLAY

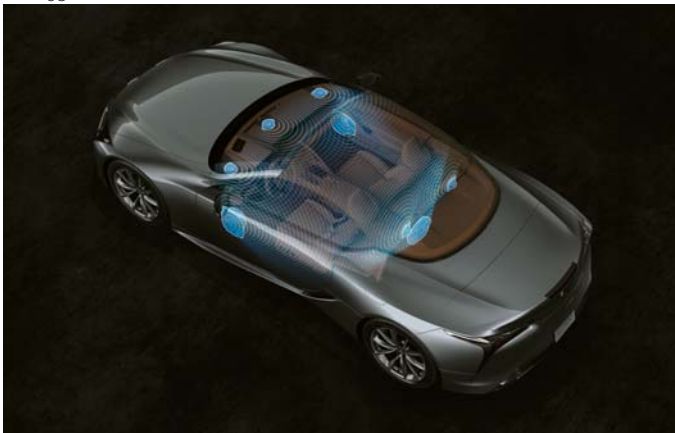
Reducing the need to look away from the road ahead, selected driving data is projected in brilliant colour directly onto the windscreen via our latest Head-Up Display technology (174 mm x 48 mm).



03

03. AUDIO

Audio system features an AM/ FM RDS tuner, CD player, Bluetooth® connectivity and DAB (Digital Audio Broadcast) / DAB Seamless Link.



04

04. 13-SPEAKER MARK LEVINSON®

This world-class 13-speaker Mark Levinson® Premium Surround system with GreenEdge™ technology is carefully crafted to the acoustic properties of the LC Convertible's cabin and even automatically adjusts the sound and speaker settings when you open the roof. Delivering a digital home-theatre experience, fidelity is further enhanced by Clari-Fi™ that rebuilds sound lost in MP3 digital compression.

01. LEXUS PREMIUM NAVIGATION

Perfectly positioned for a relaxing drive, the high definition 10.3-inch central display can be operated by voice command or the Touch Pad located on the centre console. Its split-screen capability allows you to simultaneously access information, such as Lexus Premium Navigation and climate data.

02. TOUCH PAD

You can also control the 10.3-inch screen using the Touch Pad mounted on the centre console. The Touch Pad interface has been designed to give you the intuitive feel of a smartphone, with operations such as scrolling, pinching or tapping.

03. SMARTPHONE INTEGRATION

With Apple CarPlay® and Android Auto®, the LC Convertible allows you to easily display and access some of your smartphone's apps on the 10.3-inch touchscreen.



01



02



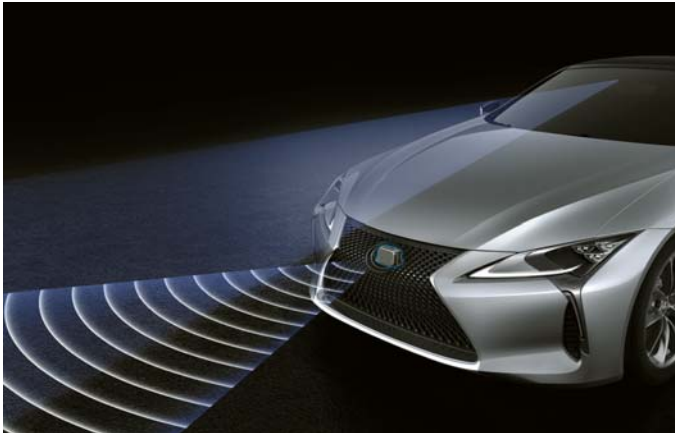
03



01

01. LEXUS SAFETY SYSTEM +

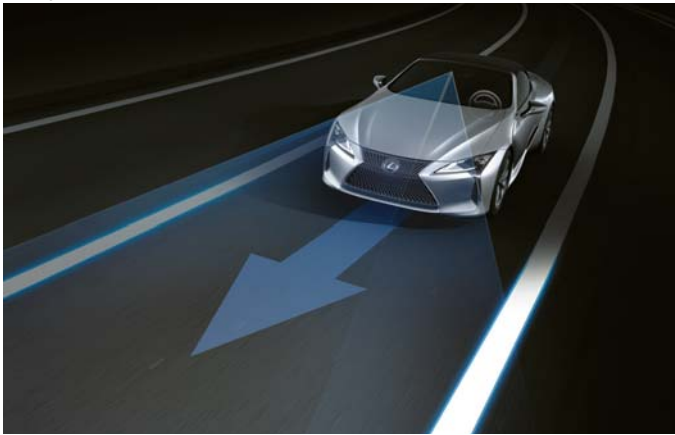
Lexus Safety System + is standard on the LC Convertible and includes a Pre-Collision System with pedestrian detection; Advanced Lane Keeping Assist to help you stay on course; Automatic High Beam for enhanced vision at night; and Dynamic Radar Cruise Control, which regulates your speed to that of the vehicle in front.



02

02. PRE-COLLISION SYSTEM

Millimetre-wave radar and an on-board computer calculate collision risk ahead. If the risk is high, Pre-Collision System alerts the driver and brake pressure is increased. When a collision is deemed unavoidable, the brakes will be applied automatically as necessary and the front seatbelts tightened. Furthermore, if an object (such as a pedestrian) is detected in front, automatic braking will activate at speeds between about 10 and 80 km/h to help avoid a collision.



03

03. LANE KEEPING ASSIST & AUTOMATIC HIGH BEAM

Lane Keeping Assist (LKA) uses a camera in the front windscreen to monitor your position in lane. If you start drifting out of lane, LKA will activate a warning buzzer and give brief corrective steering input.

At night, Automatic High Beam uses the same camera as Lane Keeping Assist to detect oncoming vehicles and automatically dip the high beam headlights. This reduces the chance of accidentally dazzling other drivers and lets you concentrate on the road ahead.



04

04. DYNAMIC RADAR CRUISE CONTROL

For a more relaxing drive, Dynamic Radar Cruise Control maintains a set distance between the LC and the vehicle ahead, even if that vehicle varies its speed.

01. POP UP HOOD

Activated by sensors mounted in the front bumper, should you collide with a pedestrian, the Pop Up Hood slightly raises the level of the bonnet to give more space between it and the hard components of the engine underneath. This reduces the risk of injuries to the pedestrian.



01

02. ACTIVE ROLL BARS

In a severe collision or in the very unlikely event of your convertible rolling over, Active Roll Bars will activate to support the vehicle and protect you and your passengers.



02

03. 6 AIRBAGS

In addition to an immensely strong passenger safety cell and Active Roll Bars, protection is provided by 6 airbags. The driver and front passenger are protected by 2-stage head airbags, as well as knee and extended side airbags. All seatbelts are also specified with pre-tensioners.



03

04. BLIND SPOT MONITOR & REAR CROSS TRAFFIC ALERT

Radar devices mounted in the rear bumper detect vehicles in adjacent lanes that are not visible in the door mirrors. If the driver is indicating to change lane and a vehicle enters the blind spot, a warning signal appears in the relevant door mirror(s).

The Rear Cross Traffic Alert function uses Blind Spot Monitor radar to detect vehicles approaching the area behind the vehicle in a car park. When necessary, it alerts you with a buzzer and a visual display in the door mirrors.



04



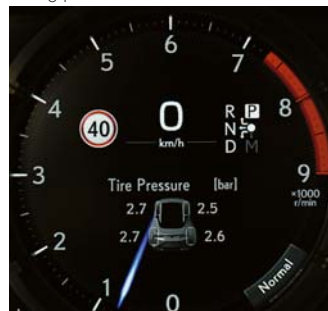
05

05. ROAD SIGN ASSIST

The Road Sign Assist (RSA) system on the LC Convertible recognises traffic signs using the windscreen mounted camera, and provides information to the driver in the multi-information display. RSA can detect signs that are compliant with the Vienna Convention (including electroluminescent and flashing signs).

06. TYRE PRESSURE WARNING SYSTEM

Receiving data from a sensor installed in each tyre, the multi-information display tracks tyre pressure data and warns accordingly should pressure drop in one or more tyres.



06



07

07. PARKING ASSIST MONITOR

To make parking even easier, sensors in the rear bumper link with an in-car beeper to warn of obstacles in your way. The beeper can be turned off when not required. Engage reverse and the view behind the LC Convertible is relayed to the 10.3-inch display, complete with on-screen guides to assist parking.



01



02

01. DRIVE MODE SELECT

Located beside the steering wheel, so you can concentrate on the road ahead, Drive Mode Select lets you shift between Eco / Comfort, Normal / Custom, Sport S / Sport S+ modes.

02. 10-SPEED PADDLE SHIFTS, MANUAL 'M' MODE

For more fun on the road and an incredibly direct, dynamic response, 'M' mode allows the driver to freely select and hold any gear using the paddle shifters located behind the steering wheel.

03. ADAPTIVE VARIABLE SUSPENSION

For an even sharper and more refined drive, in response to your driving style and road conditions, Adaptive Variable Suspension controls the damping force of all four shock absorbers - managing an incredible 650 different suspension settings.



03

04. HIGHLY RIGID BODY

The LC Convertible's driving dynamics benefit from an incredibly strong platform and new lightweight suspension components. Non-deforming body parts are made of ultra-high tensile strength steel, while lightweight aluminium is used for door, boot and bonnet panels. Strong, weight-saving Carbon Fibre Reinforced Plastic is adopted for components like the doorframes and door sills. And, because this is a convertible and requires extra strength to stop it flexing, the use of adhesives and spot weld points has been increased, and items such as a gusset, torsion box, and rear suspension tower brace have been added.



04

05. TORSEN® LIMITED SLIP DIFFERENTIAL

Not available in Northern Europe

06. REAR PERFORMANCE DAMPER

Not available in Northern Europe



05



06

01. PREMIUM BLACK TEXTILE FLOOR MAT

Luxurious textile floor mats made of acuvellour to complement the sound absorbing qualities of your car's carpets. The driver's mat has a safety fixing to prevent it from slipping.

02. WHEEL LOCK NUTS

Hardened steel coded wheel locks which provide a permanent guard for your alloy wheels.

03. TRUNK MAT

The trunk mat provides the protection of your boot space. The mat is tough, practical and easy to clean.

04. HORIZONTAL CARGO NET

Strong, woven, black nylon net for holding items securely in your car's boot area. The net fixes neatly on to pre-fitted hooks.

05. MESH WIND DEFLECTOR

For a comfortable ride when travelling at higher speeds, customers can fit a mesh wind deflector which reduces airflow around the head and blends perfectly with the convertible's luxurious interior. The mesh unit sits neatly behind the rear seats and can remain in place when the roof is raised.



01



02



03



04



05

DEVELOPING A NEW LEXUS PAINT COLOUR IS BOTH COMPLEX AND TIME CONSUMING



Lexus designers never use off-the-shelf colours, preferring instead to develop their own, from scratch, a process that can take up to two years. Often these new colours are introduced when cars like the LC are launched. The Lexus paint palette totals some 30 different colours: It includes Flare Yellow, a colour designed for the LC, as well as metallic finishes like Sonic Silver and Sonic Titanium.

Developed especially for the new LC, Flare Yellow is an emotional colour that evokes agile driving performance. Multiple yellow coats are applied to create a highly chromogenic colour. By layering the two different coats of a high saturation yellow base and a strongly brilliant mica base, a colour with high saturation and strong brilliance unlike anything seen before at Lexus has been realised.

There are no shortcuts to creating a new Lexus colour: a designer's decision comes only after going through hundreds of samples. "When developing a new colour I see so many shades of paint that I sometimes can't see straight at the end of the day," says Megumi Suzuki, one of our most experienced colour designers. To do her job, it takes a grasp of chromatic and a keen eye.

"Every time I meet someone or walk into a shop or go to someone's house, I check out colours and materials," she says. "There are a lot of people like me in our division."

Even after a colour has been decided upon, there's plenty to do. At various stages during development, Suzuki had to enlist a small army of experts: Lab technicians who mix the paint, clay sculptors, engineers and the assembly-line paint shop crew who would give each LC a flawless, uniform coat. Every few weeks Kansai Paint (a Lexus paint supplier) produces a new batch, and Lexus designers give the samples a thorough look-over, bending the test panels to mimic the contours of a car. All are scrutinised indoors and outdoors, under floodlights, in sunlight, shade and overcast conditions, and at different times of the day and months of the year.

Selecting the final colour is not easy. A colour that is dazzling on a summer morning can appear sickly in the shade or under showroom lamps. Designers also have to contend with the vagaries of their own preferences. "The odd thing about colour is that your perception of it can change depending on the season, how you feel that day and the trends you're seeing," says Suzuki.

F WHITE | 083



SONIC SILVER | 1J2



SONIC TITANIUM | 1J7



DARK GRANITE | 1G0



BLACK | 212¹



GRAPHITE BLACK | 223



RADIANT RED | 3T5



BLAZING CARNELIAN | 4Y1



FLARE YELLOW | 5C1



TERRANE KHAKI | 6X4



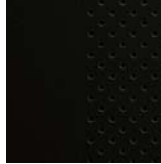
DEEP BLUE | 8X5



¹Solid colour

Please note: Due to printing variances, actual paintwork colours may vary slightly from those illustrated.

SEMI-ANILINE LEATHER¹



Black



Ochre



Flare Red

SOFT TOP²



Black



Ochre

¹ Semi-aniline leather is standard on Luxury grade. Semi-aniline leather upholstery applies to the front seats only; the rear seat upholstery is Tahara. Ochre interior is selectable with Beige or Black Soft top.
² Black soft top is equipped as standard, Ochre soft top is selectable with Ochre interior trims.

The images on the following page illustrate a selection of the interior combinations available. Your local Lexus Authorised Retailer will be pleased to provide you with any further help.



01



02

- 01 Ochre semi-aniline leather
- 02 Flare Red semi-aniline leather

EXTERIOR	LUXURY
Acoustic glass, windscreen	■
Auto-levelling headlights, static	■
Black brake callipers with Lexus logo, front and rear	■
Cornering lights, LED	■
Daytime running lights (DRL), LED	■
Door mirrors, heated, electrically auto-folding, electro chromatic (auto-dimming) with reverse tilt function	■
Dusk sensor	■
Flush surface door handles	■
Glass rear wind deflector	■
Headlight cleaners	■
Headlights, triple LED	■
Mesh screen wind deflector	■
Parking assist sensors, front and rear	■
Rain sensing windscreen wipers	■
Rear fog light, LED	■
Retractable soft top	■
Signature grille, elaborate mesh design	■
Water-repellent glass, windscreen and front side glass	■
WHEELS	
21" forged alloy wheels, two-tone finish, 245/40 (fr) and 275/35 (rr) R21 tyres	■
ACTIVE SAFETY AND DRIVING DYNAMICS	
Active brake lights	■
Adaptive Variable Suspension (AVS)	■
Anti-lock Braking System (ABS)	■
Automatic High Beam (AHB)	■
Blind Spot Monitor (BSM)	■
Drive Mode Select, Eco / Comfort / Normal / Custom / Sport S / Sport S+	■
Dynamic Radar Cruise Control (DRCC), all-speed	■
Electric Parking Brake (EPB)	■
Electric Power Steering (EPS)	■
Electronically Controlled Braking (ECB)	■
Front pedestrian detection, daytime only	■
Hill-start Assist Control (HAC)	■
Lane Departure Alert (LDA)	■
Pre-Collision System (PCS)	■
Road Sign Assist (RSA)	■
Traction Control (TRC)	■
Tyre Pressure Warning System (TPWS) with auto location	■
Vehicle Dynamics Integrated Management (VDIM)	■
Vehicle Stability Control (VSC)	■
Vehicle Sway Warning	■

- Available as standard.
- Standard on specific grade(s).
- Available as an option.
- Not available.

PASSIVE SAFETY	LUXURY
2-stage airbags, driver and front passenger	■
Active roll bar	■
Airbag cut-off switch, front passenger	■
Audible and visual seatbelts reminder, front and rear seats	■
i-Size attachment, outer rear seats	■
ISOFIX attachment, outer rear seats	■
Knee airbag, driver and front passenger	■
Pop Up Hood (PUH)	■
Seatbelt pre-tensioners, front and rear seats	■
Side airbags, driver and front passenger	■
SECURITY	
Anti-theft system - siren, immobiliser, glass breakage, intrusion and inclination sensors	■
Auto door locking	■
Double door lock	■
Wireless door lock	■
AUDIO, COMMUNICATION & INFORMATION	
10.3" multimedia display	■
13-speaker Mark Levinson® Reference Surround Sound System	■
2 USB ports, front centre console	■
8" colour multi-information display	■
Active Noise Control (ANC)	■
Analogue clock with GPS function	■
Bluetooth® mobile phone and audio connectivity	■
Digital Audio Broadcasting (DAB) radio	■
Digital speedometer	■
Head-Up Display (HUD)	■
In-dash, single-slot CD/DVD player	■
Lexus Premium Navigation	■
Parking assist monitor with on-screen guides	■
Smartphone integration (Apple CarPlay®, Android Auto®)	■
Steering wheel mounted controls, audio / display / phone / voice / DRCC / LDA	■
Touch Pad operation for multimedia display	■

- Available as standard.
- Standard on specific grade(s).
- Available as an option.
- Not available.

INTERIOR COMFORT & CONVENIENCE	LUXURY
2-way lumbar support, driver and front passenger seats	■
2-way manually adjustable front headrests	■
3-spoke, perforated leather trimmed steering wheel	■
8-way electrically adjustable driver and front passenger seats	■
Automatic air recirculation control	■
Clean air filter with pollen removal and deodoriser	■
Driving position memory (seat, steering wheel, outer mirrors) - 3 user profiles	■
Easy entry and exit function, driver seat retracts/returns	■
Easy entry and exit function, steering wheel retracts/returns	■
Electrically operated windows with one-touch control	■
Electronic climate control with nanoe® technology	■
Electronic climate control, 2-zone	■
Fixed rear seats	■
Heated front seats	■
Heated steering wheel	■
Illuminated entry system	■
L emblem embossed on front headrests	■
Leather trimmed gearshift knob	■
Lexus Climate Concierge	■
Machined aluminium sports pedals	■
Neck heater, front seats	■
Open-roof climate control	■
Paddle-shift controls	■
Rear-view mirror, electro chromatic (auto-dimming)	■
Semi-aniline leather upholstery*	■
Smart entry and start system	■
Smart key	■
Stainless steel scuff plates with LEXUS inscription, front doors	■
Ventilated front seats	■

- Available as standard.
- Standard on specific grade(s).
- Available as an option.
- Not available.

* Semi-aniline leather upholstery applies to the front seats only; the rear seat upholstery is Tahara.

PACKS	LUXURY
Lexus Safety System +	■
Automatic High Beam (AHB)	■
Dynamic Radar Cruise Control (DRCC), all-speed	■
Front pedestrian detection, daytime only	■
Lane Departure Alert (LDA)	■
Pre-Collision System (PCS)	■
Road Sign Assist (RSA)	■
Steering wheel mounted controls, audio / display / phone / voice / DRCC / LDA	■
Vehicle Sway Warning	■

- Available as standard.
- Standard on specific grade(s).
- Available as an option.
- Not available.

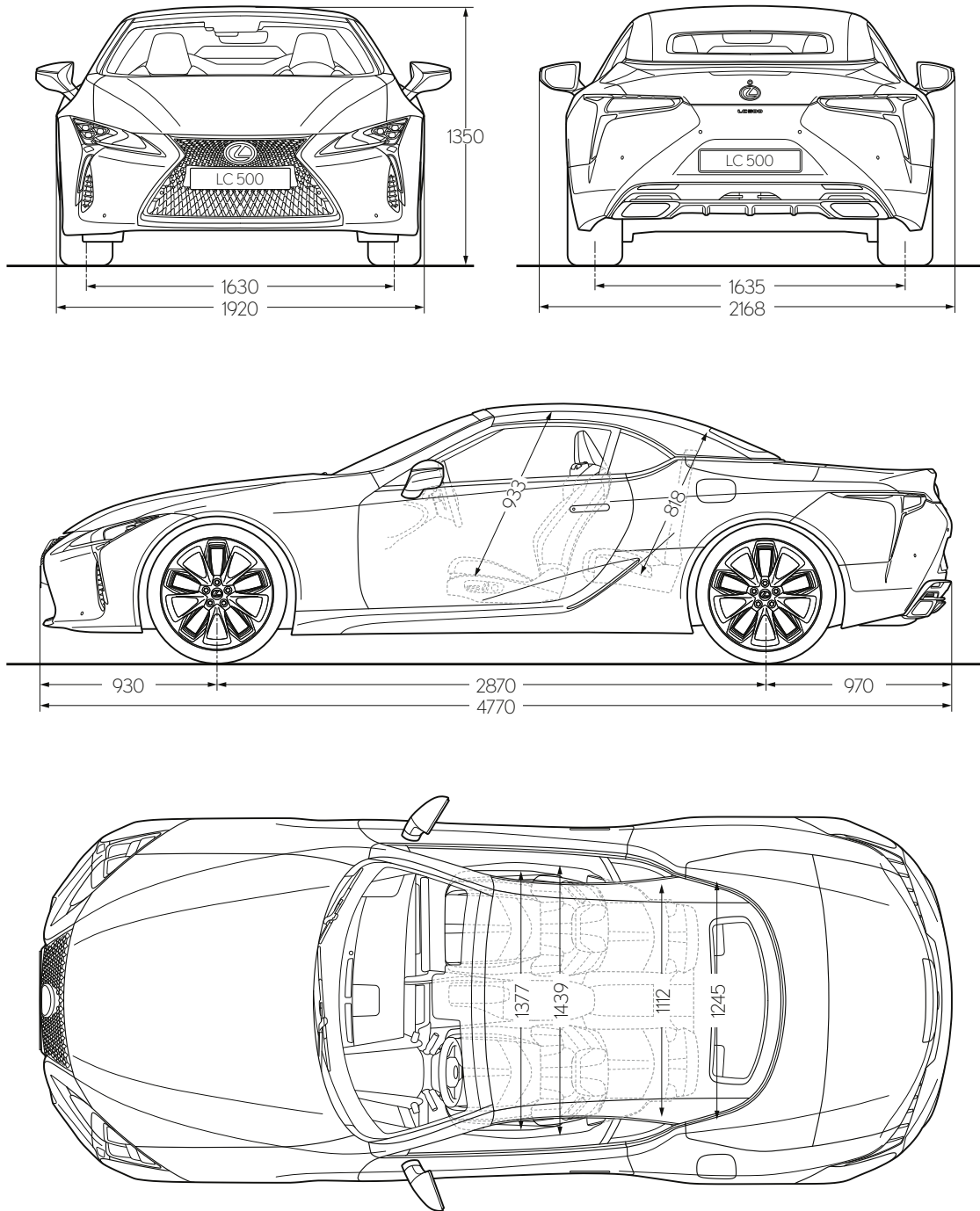
TECHNICAL DATA

ENGINE	LC 500 Convertible
Capacity (cm ³)	4969
Cylinders / Valves	V8 / 32
Maximum power (DIN hp @ rpm)	464 @ 7100
Maximum power (kW @ rpm)	341 @ 7100
Maximum torque (Nm @ rpm)	530 @ 4800
TRANSMISSION	
Type	10-speed Direct Shift Automatic
Drive	Rear-Wheel Drive
TOTAL SYSTEM OUTPUT	
Total power (DIN hp)	464
Total power (kW)	341
PERFORMANCE	
Maximum speed (km/h)	270
Acceleration 0-100 km/h (s)	5.0
FUEL CONSUMPTION ¹ (l/100 km)	
Combined	11.7
CO ₂ EMISSIONS (g/km)	
Combined	275
EMISSION STANDARD	
Euro Class	Euro 6 AP
WEIGHTS (kg)	
Gross vehicle	2450
Kerb (min. - max.)	2035 - 2055
CAPACITIES (l)	
Fuel tank	82
Luggage compartment ²	149

¹The fuel consumption and CO₂ values are measured in a controlled environment on a representative production model, in accordance with the requirements of the new WLTP European Regulation EC 2017/1151 and its applicable amendments. For each individual vehicle configuration, the final fuel consumption and CO₂ values may be calculated based on the ordered optional equipment. The fuel consumption and CO₂ values of your vehicle may vary from those measured or calculated values, as driving behaviour as well as other factors (such as road conditions, traffic, vehicle condition, tyre pressure, load, number of passengers, etc.) have an influence on a car's fuel consumption and CO₂ emissions. For more information regarding the new WLTP test method, please visit: www.lexus.eu/wltp#medc

²Luggage volume is calculated as per the VDA method.

TECHNICAL DATA



Please note: The dimensions illustrated above are measured in millimetres.

More about the new LC Convertible:

lexus.lv/LC-convertible

lexus.lt/LC-convertible

lexus.ee/LC-convertible

lexus.fi/LC-convertible

lexus.se/LC-convertible

lexus.no/LC-convertible

youtube.com/LexusEurope

twitter.com/Lexus_EU

© 2020 Lexus Europe* reserves the right to alter any details of specifications and equipment without notice. Details of specifications and equipment are also subject to change to suit local conditions and requirements. Please enquire at your local Lexus Authorised Retailer of any such changes that might be required for your area.

Note: Vehicles pictured and specifications detailed in this brochure may vary from models and equipment available in your area. Vehicle body colour might differ slightly from the printed photos in this brochure.

For further information please visit our website: www.lexus.eu

Taking care of the environment is a priority for Lexus. We take many measures to ensure that during the lifecycles of our vehicles - from design, production, distribution, sales and service to end-of-life - their environmental impact is minimised. Your retailer will be happy to provide more information on end-of-life vehicle requirements.

* Lexus Europe is a division of Toyota Motor Europe NV/SA.

Printed in Europe, April 2020

