



Pushing the limits for Better



GR YARIS

BORN FROM WRC. BUILT BY CHAMPIONS FOR THRILL SEEKERS

Over 60 years, Toyota has pushed the limits of its cars and people in motorsport to build ever-better road cars. For Akio Toyoda, President of Toyota, the GR Yaris is the embodiment of this ideal; a car forged in the heat of the World Rally Championship that still delivers thrills to drivers on everyday journeys. Developed with TOYOTA GAZOO Racing and Tommi Mäkinen Racing, GR Yaris brings leading motorsport technology and know-how to the road.

CELICA GT-FOUR ST165 RALLY CAR

Toyota's first all-wheel drive rally car, the GT-Four ST165 will be fondly remembered for powering Toyota to its first WRC win in 1989, then going on to help Carlos Sainz secure the 1990 WRC Drivers' Championship.



CELICA GT-FOUR ST185 RALLY CAR

A rally icon, the GT-Four ST185 is, to date, Toyota's most successful rally car. In three years of competition, it racked up 16 WRC victories, 3 WRC Drivers' and 2 WRC Manufacturers' Championships.



COROLLA WRC

Hailed as Toyota's purest and most advanced rally machine in 1997, the Corolla WRC, driven by Didier Auriol and Carlos Sainz, went on to achieve 4 WRC victories and the 1999 Manufacturers' Championship.



YARIS WRC

After a 17-year hiatus, Toyota returned to the World Rally Championship with the advanced Yaris WRC. Led by four-time world champion, Tommi Mäkinen, TOYOTA GAZOO Racing WRT secured the 2018 Manufacturer's Championship in only its second year and the Driver's Championship in 2019 with Ott Tänak.



Pushing the limits for Better

A scenic mountain landscape with a winding road and sunbeams. The sun is shining from the top right, creating rays of light that illuminate the scene. The mountains are covered in green vegetation, and a winding road is visible in the foreground. The overall atmosphere is bright and adventurous.

FIND YOUR GR PLAYGROUND

EVERYDAY EXHILARATION

Born from an absolute focus on driving pleasure, GR Yaris makes every road feel like your playground. Incorporating knowledge and technology born from WRC, this one-of-a-kind hot hatchback has been tuned by the TOYOTA GAZOO Racing World Rally Team to make a thrilling impression. Powerful, agile, yet practical and fun to drive, the rally-bred GR Yaris promises to exhilarate you every day, on whatever roads you tackle.

CONTENTS

- 2-3 GR Racing Heritage
- 4-5 Introduction
- 6-11 Drive Dynamics
- 12-13 Performance
- 14-15 GR-FOUR AWD System
- 16-17 Exterior Design
- 18-19 Motomachi Production
- 20-21 Safety
- 22-23 Interior
- 24-25 Sport Grade
- 26-27 Packs
- 28-29 Colours, trims & wheels
- 30-33 Specifications
- 34-35 Peace of Mind



EMBRACE THE CONDITIONS

Sometimes you need to step out of your comfort zone to get the most out of life. It's only when you put your faith in your car's ability do you realise what it's capable of.



THE TOUGHEST CONDITIONS OFTEN MAKE THE BEST DRIVING CONDITIONS

Come rain or shine, GR Yaris boasts the all-weather credentials to deliver fun at every turn. Its bespoke platform was honed by Tommi Mäkinen Racing, who perfected its advanced aerodynamics, weight distribution and lightweight body. Harnessing the power from its extraordinary 1.6-litre turbocharged engine is its GR-FOUR 4WD system which, along with high-performance double-wishbone rear suspension and a sporty six-speed transmission, provides you with rally-driver composure in all conditions.





RALLY-BRED SUSPENSION

A new MacPherson strut and double-wishbone suspension set-up, tuned by the TOYOTA GAZOO Racing World Rally Team, delivers outstanding traction and control on the most demanding surfaces.



EXHILARATING IN ALL EXTREMES

Wherever you head for your thrills, GR Yaris is a rewarding and sure-footed companion. Its high-performance double-wishbone suspension set-up maximises tyre grip and steering feedback, meaning progress is made with confidence and accuracy even on broken or slippery surfaces. Reinforcing this unflappable attitude are 356 mm two-piece front brake discs with four-pot calipers – the largest in its class – for unwavering feel and stopping power.





THE BEST VIEW COMES AT THE TOP OF THE HARDEST CLIMB

Whether hugging hairpins or braking into bends from high speed, GR Yaris fills you with confidence. Rigid, lightweight and low-slung, its body incorporates additional strengthening and weight-saving materials, including a carbon fibre polymer roof to ensure that it's agile and thrilling in the turns. With its GR-FOUR AWD switch delivering the torque balance to suit your mood, you can go from exceptional control on track to exhilarating fun on the road at the turn of a dial.

POWER COUPLE

Repeatedly tested and honed by WRC drivers, the GR-FOUR 4WD system features a high-response coupling that balances

torque between front and rear axles. This delivers greater cornering response and stability no matter how tight the corners come.



POWER THAT REACHES NEW HEIGHTS

Featuring motorsport technologies never seen before in a production car, the exciting GR Yaris has the power to leave you breathless. With a world-class output of 261 DIN hp and 360 Nm, its newly developed three-cylinder, 1.6-litre turbocharged engine delivers outstanding acceleration and response. Incorporating Toyota-first techniques and materials, such as a unique block, bespoke pistons and a single-scroll ball-bearing turbo to reduce weight and enhance drivability, GR Yaris has the power to make every journey come alive.

DYNAMIC DISPLAY

With turbo pressure, 4WD mode, G-force and gearshift indicators clearly displayed on the 4.2" colour TFT screen, the GR Yaris's dynamic meters put the focus on high-performance driving.



OUTSTANDING PERFORMER

Compact and lightweight, the GR Yaris's smooth, free-revving 1.6-litre powerplant is the most powerful three-cylinder engine in its class. Thanks to a power to weight ratio of 4.9 kg per DIN hp, it sprints from 0-100 km/h in 5.5 seconds and on to a top speed of 230 km/h.





RACING PEDIGREE AROUND EVERY CORNER

Co-developed with the TOYOTA GAZOO Racing World Rally Team, the GR Yaris rewards you with the composure of a rally star. Its lightweight GR-FOUR 4WD system features a host of innovations to optimise power to the road, including high-response coupling and two Torsen limited-slip differentials* which cleverly manage the torque delivered to each wheel. Offering outstanding traction and control, GR-FOUR gives you confidence on every surface and around every corner, whether commuting or competing.

* Available with optional Circuit Pack.

GR-FOUR: INNOVATION AND CONTROL

The GR-FOUR AWD switch enables you to vary torque distribution through Normal (60:40), Sport (30:70) and Track (50:50) modes, letting you match the car's attitude to your mood.



LOWER AND WIDER STANCE

To optimise aerodynamic performance and enhance stability and handling, GR Yaris features a lower, wider stance that's finished off with eye-catching 18", 10-spoke alloy wheels.



SHAPED BY PERFORMANCE

The dramatic GR Yaris has been shaped by one vision: the pursuit of performance. Its unique body is sculptured for aerodynamic performance, resulting in a lower roofline and smooth coupé-like design. A carbon fibre polymer roof and aluminium panels lower the car's centre of gravity and reduce weight to enhance agility. Elsewhere, a wide front grille not only cements this Yaris's GR status but aids brake and engine cooling, ensuring it performs visually as well as in the heat of a race.

SMOOTHER AND LIGHTER SHELL

Along with its purposeful front air intakes, the lightweight carbon fibre polymer roof has been sculptured by hours of wind tunnel testing, leading to a lower roofline that smoothly controls air to the rear of the car for stable handling.





A HANDMADE HOT HATCH

When building a car that's out of the ordinary, only an extraordinary production line will do. Taking over ten times longer to make than a conventional mass-produced car, each GR Yaris is hand-built on a dedicated GR production line. There are no relentless conveyor belts here, just highly skilled technicians meticulously hand-assembling cars with exceptional care and build quality. The birthplace of sports car legends such as the Lexus LFA and Toyota Supra, the iconic Motomachi factory in Japan is now home to a new icon: the GR Yaris.

A LABOUR OF LOVE

In their quest for absolute perfection, Motomachi technicians meticulously check body alignment and rigidity, resulting in an

assembly time for each GR Yaris that's ten times longer than a conventional mass-produced car.



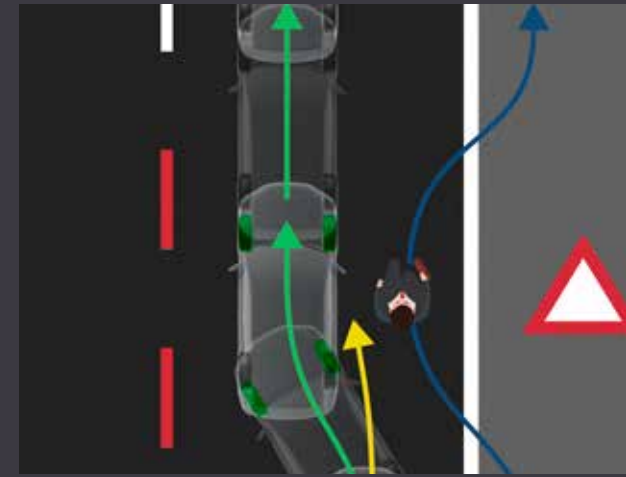


PROTECTION TO MATCH ITS PERFORMANCE

Whether it's a stop-start commute or a high-speed cruise, GR Yaris is always on the lookout for danger. Equipped with the latest Toyota Safety Sense technologies, including Pre-Collision System with Emergency Steering Assist, it anticipates potential hazards and helps to avoid or mitigate the effects of a collision. When combined with the superior traction and stability of its GR-FOUR 4WD system, GR Yaris delivers an all-round performance to keep you safe.

TOYOTA SAFETY SENSE

Includes Pre-Collision System with Emergency Steering Assist and Lane Departure Alert with Steering Control.



YOUR EXCUSE TO TAKE THE LONG WAY HOME

From sophisticated frameless doors to sporty GR badging, GR Yaris gets your pulse racing the moment you step inside. Supportive Ultrasuede® GR sport seats, a short-throw gear lever and aluminium pedals are perfectly placed for comfort and control, whether you're in the mood to play or relax. The shapely GR leather steering wheel delivers a satisfying feel and a clear view of the TFT display's 4WD mode and gear-shift indicators, ensuring the next drive is as unforgettable as the last.



FOCUSED ON THE DRIVE

With essential controls within easy reach and driving information at a glance on the 4.2" TFT screen, your eyes are always on the road in the driver-focused GR Yaris.

PREMIUM PERFORMER

Frameless doors deliver a sophisticated coupé look to the GR Yaris's cabin. Combined with soft-touch materials and exclusive silver smoke trims, it has the qualities to relax and reward in equal measure.



SPORT GRADE

MAIN FEATURES

- 18" black alloy wheels (15-spoke)
- GR design lower front grille
- Open differential lock
- GR-FOUR AWD switch
- Frameless doors
- Chrome centre cap surrounds
- Carbon fibre polymer roof with woven carbon fibre-look wrap
- Mobile integration (Apple CarPlay & Android Auto)
- GR logo on steering wheel
- 3-spoke leather sports steering wheel
- Door scuff plates
- Front sports seats
- MacPherson front suspension
- Double wishbone rear suspension



THE ROAD TO HAPPINESS

Hairpin bends. Breathtaking crests. Fast, flowing straights. A test for the best sports cars, but conditions the GR Yaris was born for.



CONVENIENCE PACK

EQUIPPED TO ENTERTAIN

With its 8" navigation system, Head Up Display and advanced safety systems, the Convenience Pack adds another layer of comfort to those unforgettable driving experiences.

POWERFUL SOUNDS

The 8-speaker JBL premium audio system delivers crystal-clear high notes thanks to its unique tweeters, perfect for those times when you want to sit back and soak up the sounds.

MAIN FEATURES (IN ADDITION TO SPORT)

- JBL® premium sound system
- Head Up Display
- Navigation system
- Front parking sensors
- Blind Spot Monitor (BSM)
- Rear Cross Traffic Alert with automatic braking (RCTB)
- Rear parking sensors
- 8 speakers
- Illuminated entry system



CIRCUIT PACK

MADE FOR THE TRACK

Featuring GR circuit suspension and two Torsen limited-slip differentials, the Circuit Pack enhances handling response and precision, maximising your speed on track and widening your smile.



MAIN FEATURES (IN ADDITION TO SPORT)

- 18" forged alloy wheels (10-spoke)
- Red sports front brake pads
- Torsen limited slip differential (LSD) lock
- GR Circuit suspension

THE LIGHTWEIGHT LOOK

The Circuit Pack's pedigree is showcased by 18" 10-spoke forged alloy wheels shod in Michelin Pilot Sport 4 tyres. Eye-catching red GR brake calipers complete the racecar look.



COLOURS, WHEELS & TRIMS



Black & red Ultrasuede® with black leather-like outer bolsters
Standard on Sport grade and all Packs



18" black alloy wheels
(15-spoke)
Standard on Sport grade
and Convenience Pack



18" forged alloy wheels
(10-spoke)
Standard on Circuit Pack



1.

2.

3.

4.

- 1. 089 Platinum Pearl White*
- 2. 3U5 Flame Red[§]
- 3. 040 Pure White
- 4. 219 Magnetic Black[§]

* Pearlescent.
§ Metallic.

SPECIFICATIONS

Petrol

ENVIRONMENTAL PERFORMANCE

1.6L Turbo 16PT (261 HP) 6 Speed Manual

Fuel consumption (applicable legislation)	
Combined speeds (l/100km)	8.2
Low speed (l/100km)	10.2
Medium speed (l/100km)	7.9
High speed (l/100km)	7.2
Extra high speed (l/100km)	8.6
Recommended fuel grade	95 or more (octane)
Fuel tank capacity (litres)	50
Carbon dioxide, CO₂ (applicable legislation)	
Low speed (g/km)	231
Medium speed (g/km)	178
High speed (g/km)	163
Extra high speed (g/km)	194
Exhaust emissions (regulation EC 715/2007 as amended by EC 2018/1832AP)	
Euro class	EURO 6 AP
Carbon monoxide, CO (mg/km)	212.9
Hydrocarbons, THC (mg/km)	21.5
Hydrocarbons, NMHC (mg/km)	16.6
Nitrogen Oxides, NO _x (mg/km)	19.1
Smoke particulates (mg/km)	0.38
Sound level drive by (dB(A))	65.0

The fuel consumption and CO₂ values are measured in a controlled environment on a representative production model, in accordance with the requirements of the new WLTP European Regulation EC 2017/1151 and its applicable amendments. For each individual vehicle configuration, the final fuel consumption and CO₂ values may be calculated based on the ordered optional equipment. The fuel consumption and CO₂ values of your vehicle may vary from those measured or calculated values, as driving behaviour as well as other factors (such as road conditions, traffic, vehicle condition, tyre pressure, load, number of passengers, etc.) have an influence on a car's fuel consumption and CO₂ emissions. For more information regarding the new WLTP test method, please visit: <https://www.toyota-europe.com/world-of-toyota/feel/environment/worldwide-harmonized-light>

Petrol

ENGINE

1.6L Turbo 16PT (261 HP) 6 Speed Manual

Engine code	G16E-GTS
Number of cylinders	3 cylinder, in line
Valve mechanism	DOHC4-valve Roller-rocker
Fuel system	Direct multipoint injection
Displacement (cc)	1618
Bore x stroke (mm x mm)	87.5 x 89.7
Compression ratio	10.5:1
Maximum power output (DIN hp)	261
Maximum power output (kW/rpm)	192/6500
Maximum torque (Nm/rpm)	360/3000-4600

PERFORMANCE

1.6L Turbo 16PT (261 HP) 6 Speed Manual

Maximum speed (km/h)	230
0-100 km/h (secs)	5.5
Drag coefficient	0.352

WEIGHT

1.6L Turbo 16PT (261 HP) 6 Speed Manual

Kerb weight (kg)	1280-1310
------------------	-----------

BRAKES

1.6L Turbo 16PT (261 HP) 6 Speed Manual

Front	Ventilated disc 4 cylinder
Rear	Ventilated disc 2 cylinder

SPECIFICATIONS

Petrol

EXTERIOR DIMENSIONS

1.6L Turbo 16PT (261 HP) 6 Speed Manual

Exterior length (mm)	3995
Exterior width (mm)	1805
Exterior height (mm)	1455
Front tread (mm)	1536*
Rear tread (mm)	1572*
Front overhang (mm)	830
Rear overhang (mm)	605
Wheelbase (mm)	2560

INTERIOR DIMENSIONS

1.6L Turbo 16PT (261 HP) 6 Speed Manual

Interior length (mm)	1880
Interior width (mm)	1430
Interior height (mm)	1175

LOAD VOLUME

1.6L Turbo 16PT (261 HP) 6 Speed Manual

Luggage compartment length (5 seats up) (mm)	578
Luggage overall width (mm)	1085
Luggage overall height (mm)	572

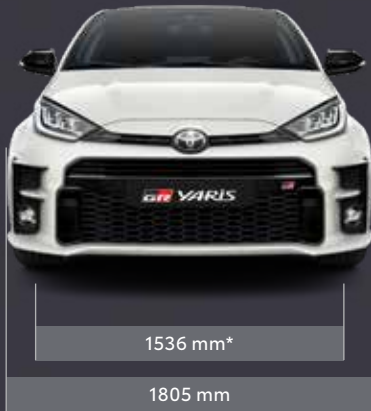
STEERING

1.6L Turbo 16PT (261 HP) 6 Speed Manual

Turning circle – tyre (m)	10.62
---------------------------	-------

WHEELS

	Sport	Circuit pack	Convenience pack
18" black alloy wheels (15-spoke)	●	–	●
Chrome centre cap surrounds	●	–	●
18" forged alloy wheels (10-spoke)	–	●	–
Tyre repair kit	●	●	●



● = Standard ○ = Optional – = Not Available * Front and rear tread based on Gross Vehicle Mass.

EQUIPMENT

EXTERIOR

Sport

18" Alloy wheels (225/40 R18)	●
Tyre repair kit	●
Tyre pressure warning system	●
Black, electrically adjustable, retractable and heated door mirrors	●
LED foglamps	●
LED headlamps	●
LED daylight running lights	●
LED rear combination lamps	●
Roof spoiler	●
Carbon fiber reinforced plastic roof (CFRP)	●
Shark Fin antenna	●
Privacy glass	●
Dual exhaust pipes	●

PERFORMANCE

Sport

GR-FOUR 4WD system	●
Drive mode selector (Normal, Sport, Track)	●
Sports suspension	●
18" front brake disks	●
16" rear brake disks	●

COMFORT

Sport

Smart Entry & Push Start System	●
Tilt and telescopic steering wheel	●
Sports steering wheel	●
Heated steering wheel	●
Leather gear shift lever and knob	●
Leather handbrake	●
Dual-zone automatic air conditioning	●

COMFORT

Sport

Rain sensor	●
Front power windows	●
Auto up & down function on power windows	●
Textile floor mats	●
12V access socket	●

MULTIMEDIA AND INFORMATION

Sport

Toyota Touch® 2 multimedia system	●
8" Multimedia screen	●
Mobile integration	●
6 speakers	●
USB connector	●
Rear-view camera	●
Bluetooth® for hands-free calls and music streaming	●
4,2" colour TFT multi-information display	●

SEATS

Sport

4 seats	●
Ultrasuede® GR sport seats	●
Driver seat: height adjustable	●
Heated front seats	●
Folding rear seats	●

STORAGE COMPARTMENTS

Sport

Glovebox	●
Cup holders	●
Front door pockets	●

● = Standard

EQUIPMENT

SAFETY

Sport

Active	
Toyota Safety Sense:	●
Pre-Collision System (PCS)	
Adaptive Cruise Control (ACC)	
Lane Departure Alert (LDA)	
Automatic High Beam (AHB)	
Road Sign Assist (RSA)	
Anti-lock Braking System (ABS) with Electronic Brake force Distribution (EBD) and Brake Assist (BA)	●
Sport Vehicle Stability Control (S-VSC)	●
Hill-start Assist Control (HAC)	●
Emergency brake lights	●
Passive	●
SRS front airbags	●
SRS front side airbags	●
SRS curtain shield airbags	●
Passenger SRS airbag on-off switch	●
Seat belt warning system (front and rear)	●
ISOFIX child restraint system (2nd row seats)	●

SECURITY

Sport

GR-FOUR 4WD system	●
--------------------	---

OPTION PACKS

Sport

Circuit Pack:	○*
18" forged alloy wheels (225/40R18)	
Red painted brake calipers	
GR Circuit suspension	
Torsen Limited Slip Differential (LSD)	
Convenience Pack:	○*
Toyota Touch® 2 & Go navigation system	
JBL premium sound system with 8 speakers	
Head-Up Display (HUD)	
Ambient lighting on doors	
Front and rear parking sensors	
Blind Spot Monitor (BSM)	
Rear-Cross Traffic Alert (RCTA)	

● = Standard ○ = Optional

* Packs can not be combined

YOUR COMPLETE
PEACE OF MIND
WITH TOYOTA



QUALITY SERVICE

Your Toyota will need a Health & Safety check at least once every 2 years/30,000 km (whichever comes sooner). An intermediate check is necessary every year or 15,000 km.

LOW MAINTENANCE COSTS

All Toyota vehicles are designed and engineered to minimise your maintenance costs.

GENUINE PARTS

Providing the reassurance of Toyota quality, only genuine and approved components are used on your vehicle.

COMPREHENSIVE WARRANTY

Every new Toyota comes with a 3-year/100,000 km vehicle warranty*, which covers any defect caused by a manufacturing fault[§].

ADDED SECURITY

Toyota's comprehensive security system withstands the insurance industry's rigorous 5-minute attack test.

TOYOTA EUROCARE

Enjoy peace of mind driving with complimentary Toyota Eurocare roadside assistance in 40 European countries for 3 years[°].

GENUINE ACCESSORIES

Toyota accessories are designed and manufactured with the same care, quality and attention to detail as Toyota vehicles. All accessories are covered by a 3-year warranty when purchased together with the vehicle[§].

For more information on peace of mind visit: www.toyota-europe.com/service-and-accessories

* Check with your retailer for specific warranty details. [§] Transport to the nearest authorised Toyota repairer will also be covered. In addition the 3-year/unlimited mileage paint warranty protects against defects and surface rust caused by a manufacturing fault. Every new Toyota is covered by a 12-year anti-corrosion (not valid for commercial vehicles) warranty against perforation of body panels caused by a manufacturing fault in materials or workmanship. [°] Belgium 5 years/Portugal and Denmark 1 year.



Pushing the limits for Better

[TOYOTA-EUROPE.COM](https://www.toyota-europe.com)

To the best of our knowledge, all information in this brochure is correct at time of going to print. Details of specifications and equipment provided in this brochure are subject to local conditions and requirements and may, therefore, vary from models available in your area. Please enquire with your local retailer for details on your local specifications and equipment. • Vehicle body colours may differ slightly from the printed photographs in this brochure. • Toyota Motor Europe reserves the right to alter any details of specifications and equipment without prior notice. • © 2020 by Toyota Motor Europe NV/SA ('TME'). • No part of this publication may in any way be reproduced without the prior written approval of Toyota Motor Europe.

10/20/GRYARIS/ENG/0000 YAMB234