



TOYOTA

ALWAYS A  
**BETTER** WAY

# How to Share to Car

# Share to Car

Using Share to Car, you can plan your journey in advance by searching for directions on your smartphone , in the comfort of your own home.

These directions can then be transferred to your car using the following, simple process.

# Before you use Share to Car

Your multimedia device and your car need to be linked in the app.

Verify that the Multimedia device ID appears in the app (wheel icon > settings > car tab > Multimedia section).

If it does not appear then add it, following the in-app instructions.

# Using Share to Car: Overview

Step 1 – From the homepage of the app Click on “Services”.

Step 2 – Click on “Share to Car”

Step 3 – Click on “Where to” to input your destination.

Step 4 – Enter your destination or first stopover.

Step 5 – Click on “+” to add further intermediate stops.

Step 6 – Enter the address of your destination.

Step 7 – When route planning is ready, click on “Send to Car”.

Step 8 – A confirmation screen will be shown.



# Using Share to Car: Overview

Step 9 – The last trip Sent to Car will appear on the service page

**In- Car:**

Step 10 – Click on “Setup”.

Step 11 – Click on the drop down arrow.

Step 12 – Click on “Online” and then “Toyota online”.

Step 13 – Confirm the correct account is shown & then click the down arrow.

Step 14 – Turn on “POI Auto Download” or alternatively click on “Load POIs/routes from server”.

Step 15 – Your trip has been retrieved!

# Using Share to Car: Overview cont.

Step 16 – To use the shared trip click on “Map”.

Step 17 – Click on the search icon.

Step 18 – Click on “Favourites”.

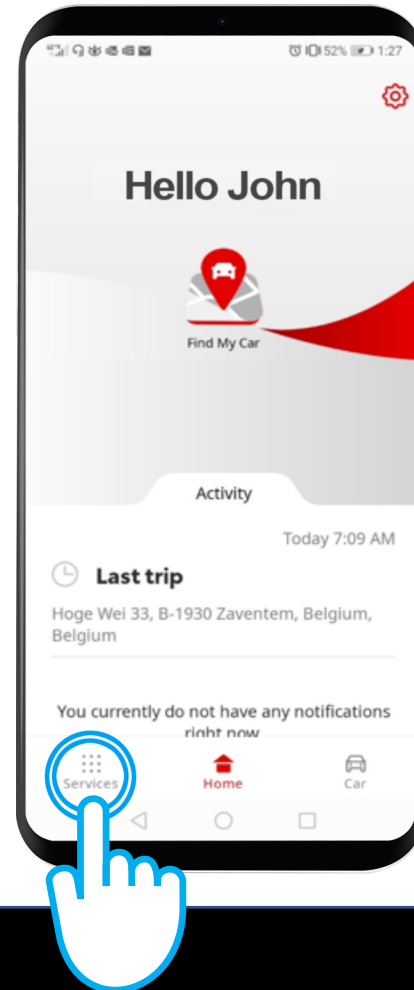
Step 19 – Click on the trip shared to car.

Step 20 – The shared trip will be loaded.

Step 21 – You can now start driving.

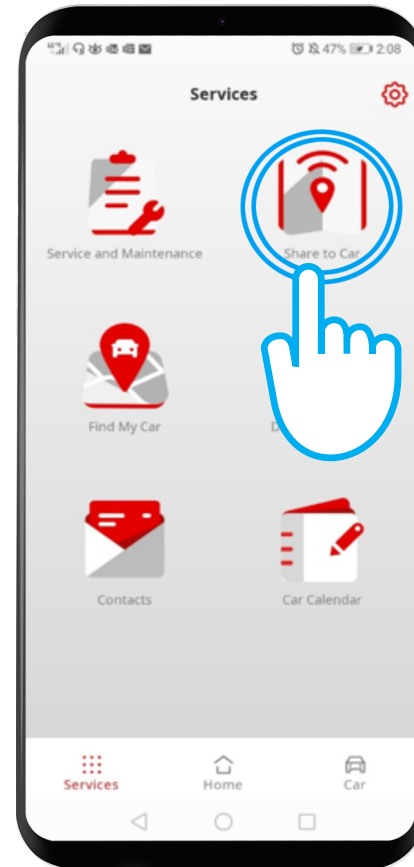
# Using Share to Car: Step 1

From the homepage click on “Services”.



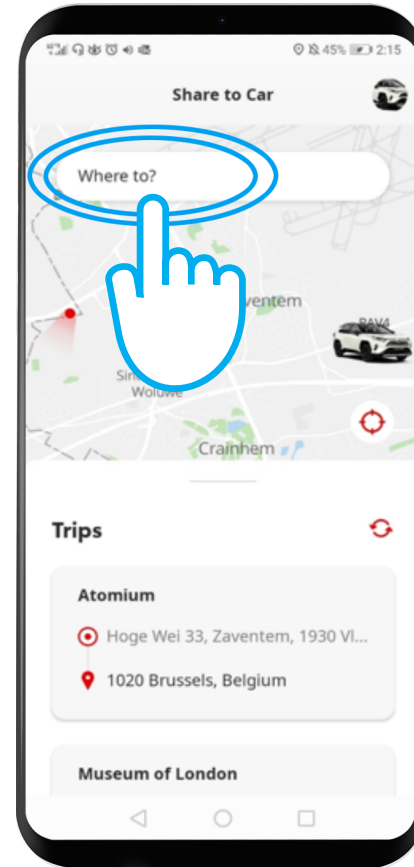
# Using Share to Car: Step 2

Click on “Share to Car”.



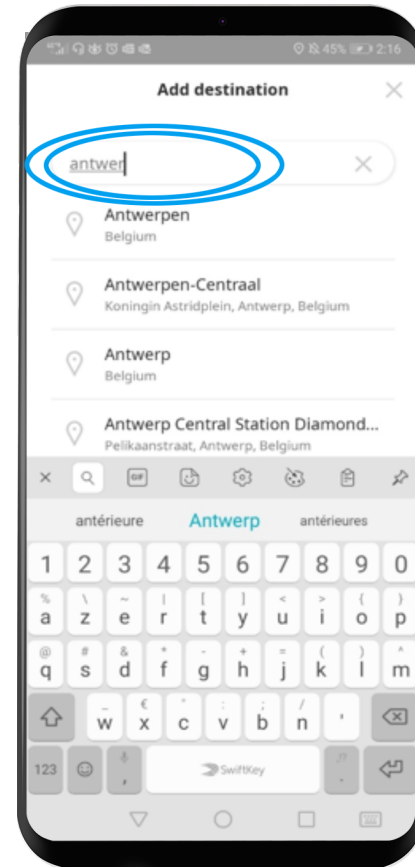
# Using Share to Car: Step 3

Click on “Where to” to input your destination and open your phone keyboard.



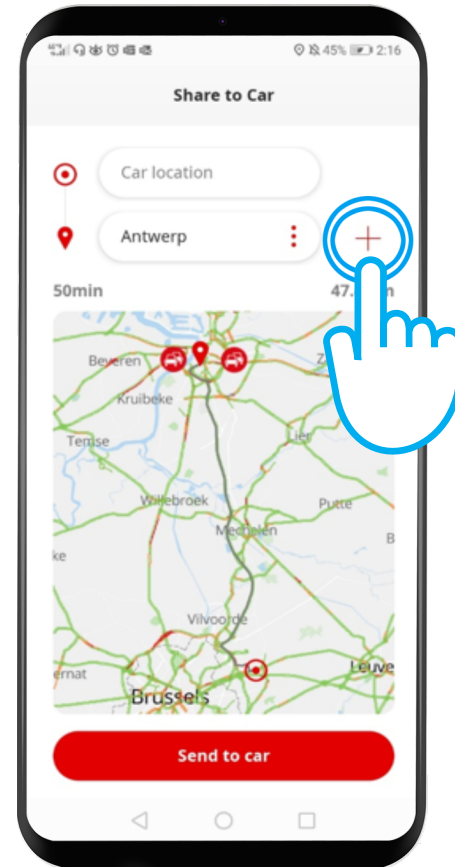
# Using Share to Car: Step 4

Enter your destination or your first stopover.



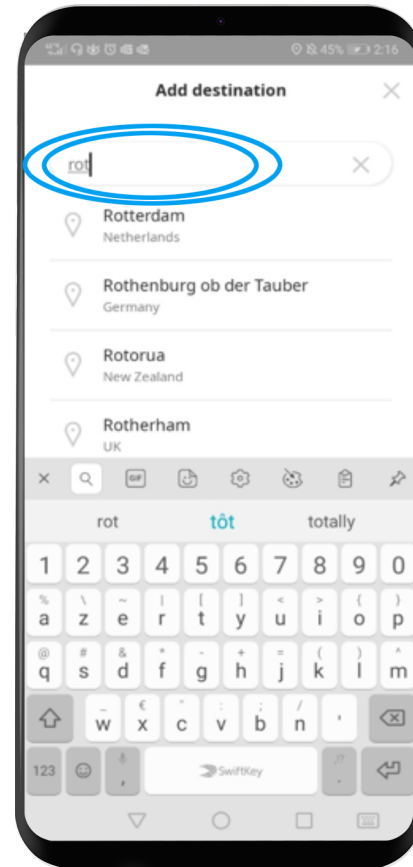
# Using Share to Car: Step 5

You can enter up to 9 intermediate stops (a maximum of 10 locations).  
To add further stops click on “+”.



# Using Share to Car: Step 6

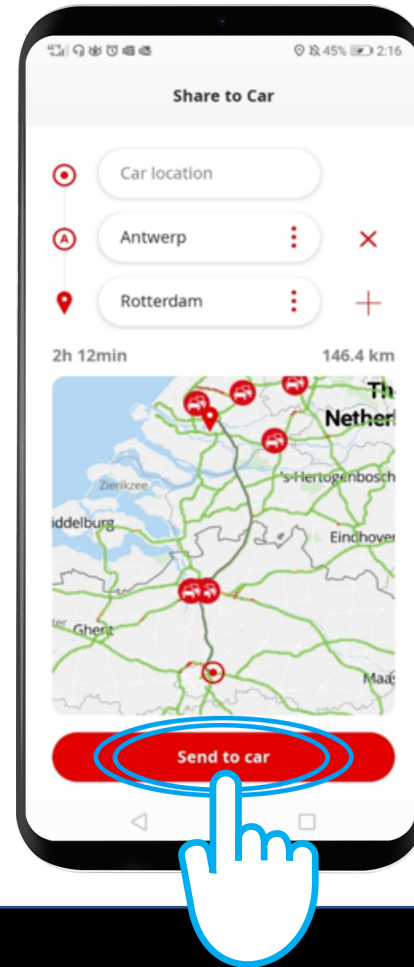
Enter the address of your destination.





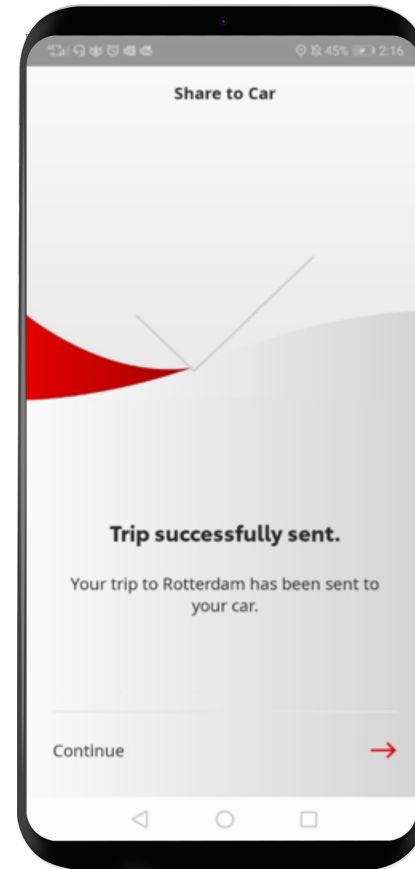
# Using Share to Car: Step 7

When your route planning is ready, click on “Send to car”.



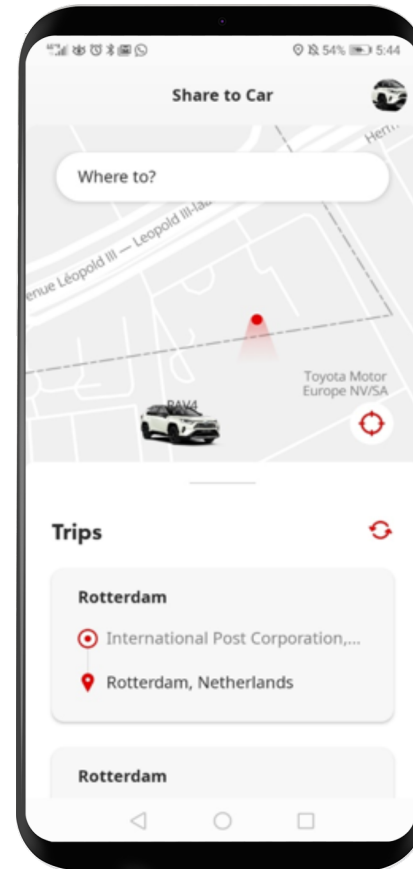
# Using Share to Car: Step 8

A confirmation screen will be shown.



# Using Share to Car: Step 9

The last trip Sent to Car will then appear on the service page.



# Before you use Share to Car: In-car

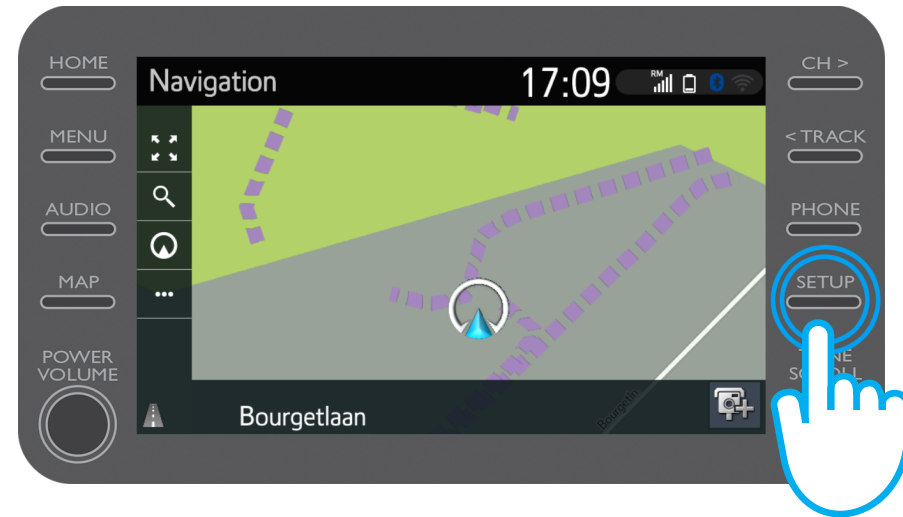
Before downloading your route to your car, you must ensure that your car has internet access.

One method of connecting is using Bluetooth tethering.

Please refer to “How to enable Bluetooth tethering”.

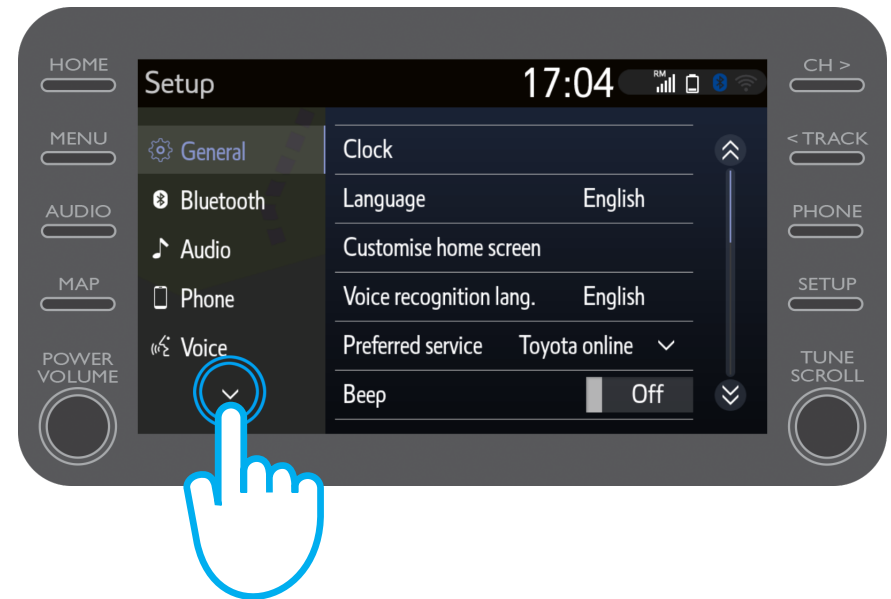
# Using Share to Car: Step 10

When your car is connected to the internet via Bluetooth tethering, click on “Setup”.



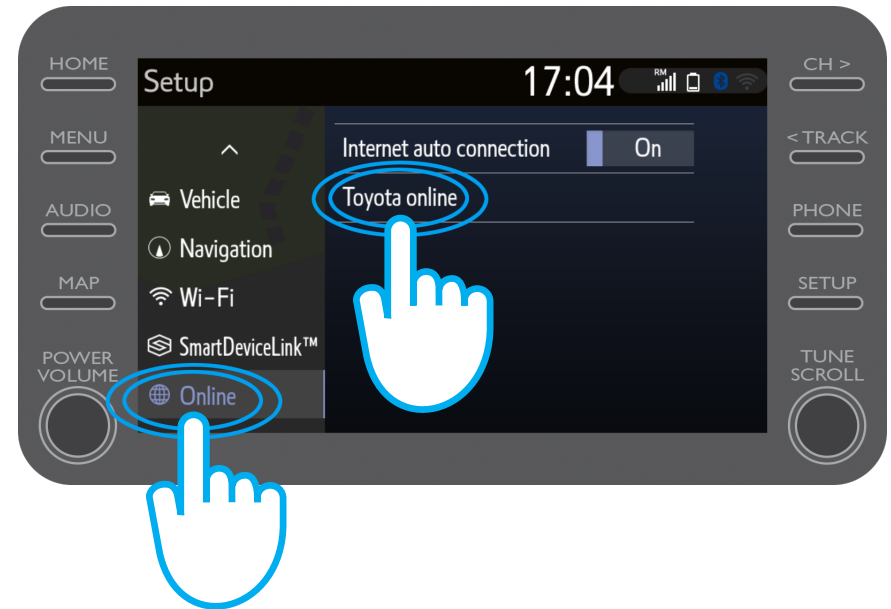
# Using Share to Car: Step 11

Click on the drop down arrow.



# Using Share to Car: Step 12

Click on “Online” and then “Toyota Online”.

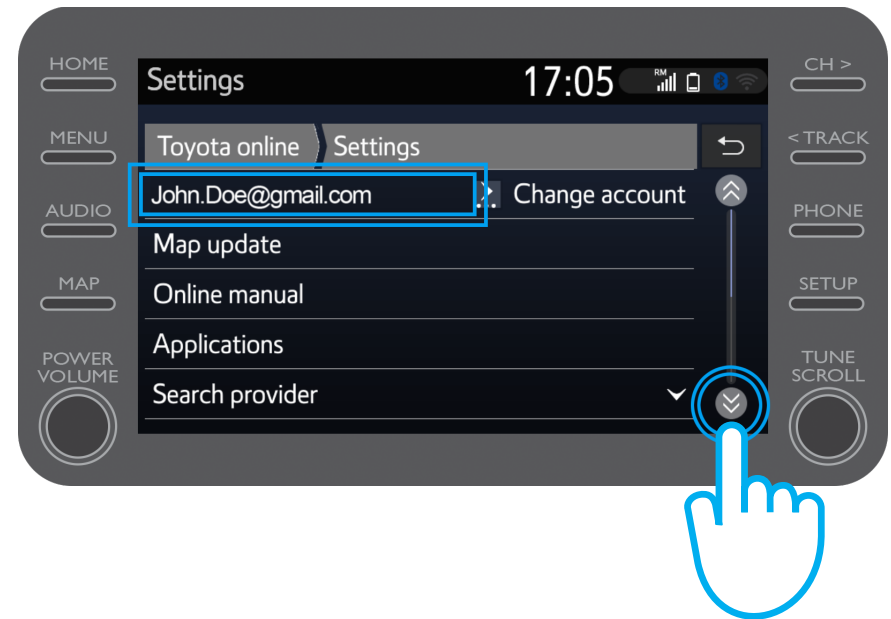


# Using Share to Car: Step 13

Check that the account shown is the one which you used in the app to Share to Car.

If not, click on “Change account”

Click on the down arrow.

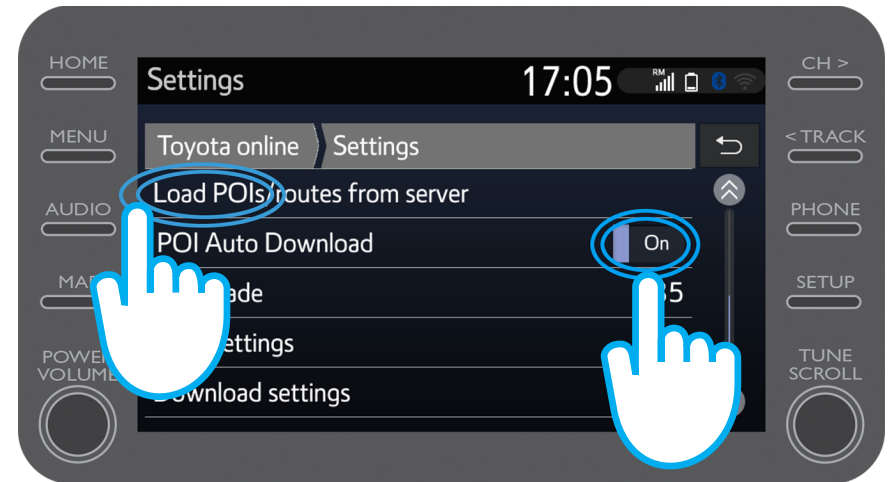




# Using Share to Car: Step 14

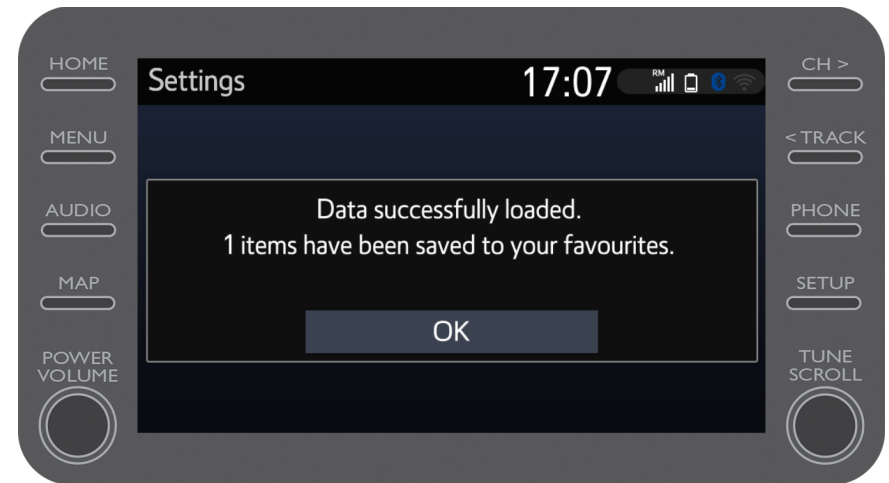
Turn on “POI Auto Download” so that POIs and shared trips will automatically download every time Bluetooth tethering is activated.

Alternatively click on “Load POIs/routes from server” to manually download the Share to Car trip.



# Using Share to Car: Step 15

Your trip has been retrieved!



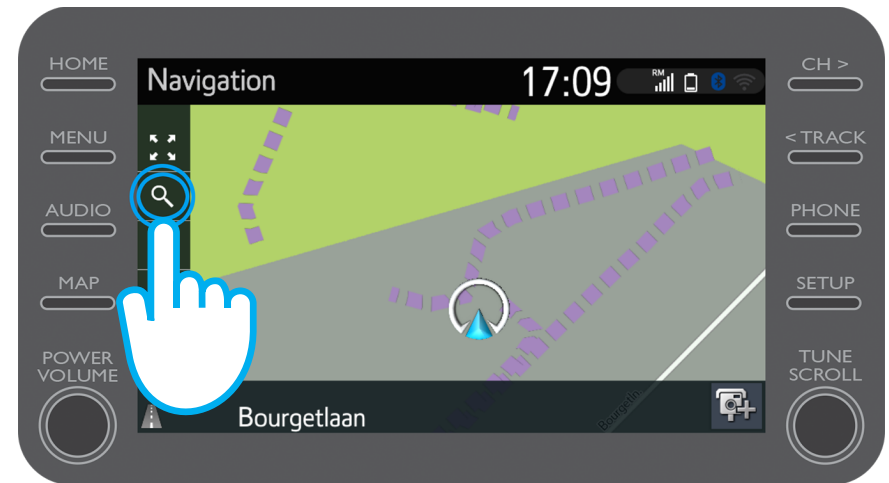
# Using Share to Car: Step 16

To use the shared trip, click on “Map”.



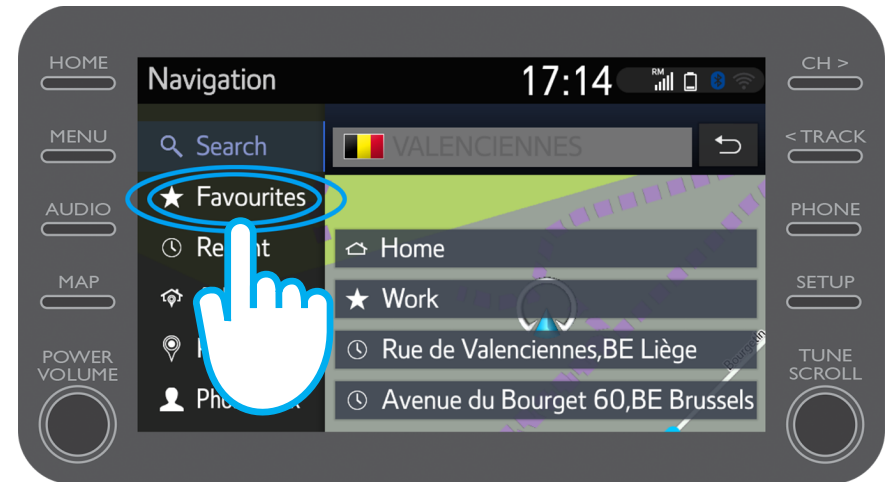
# Using Share to Car: Step 17

Click on the search icon.



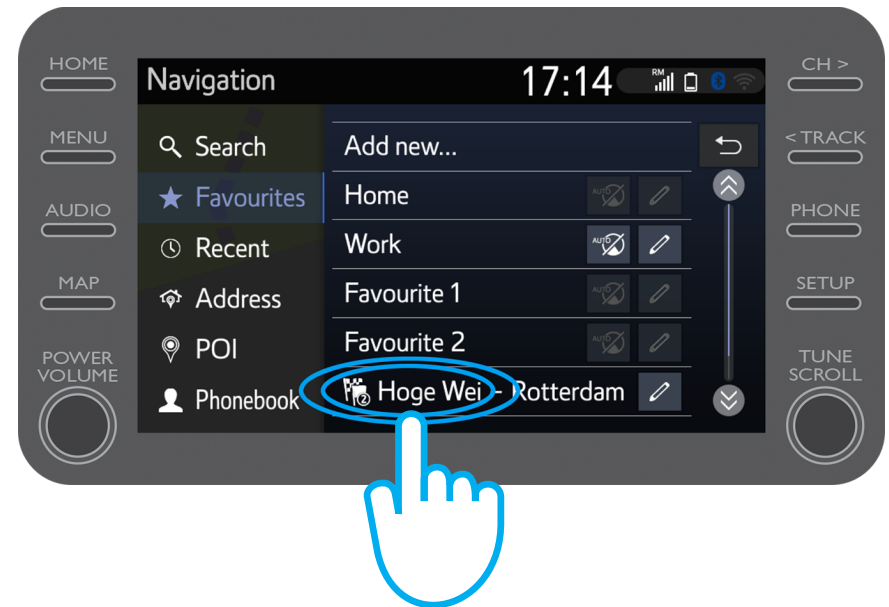
# Using Share to Car: Step 18

Click on “Favourites”.



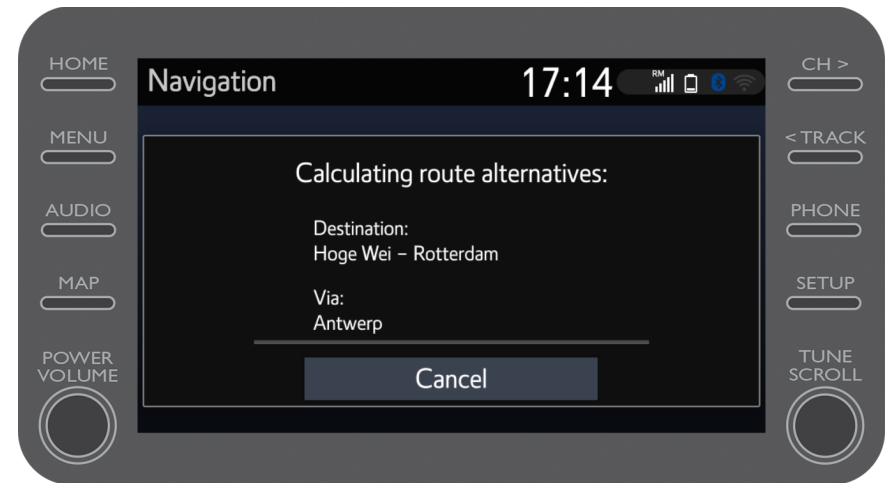
# Using Share to Car: Step 19

Click on the trip shared to car.



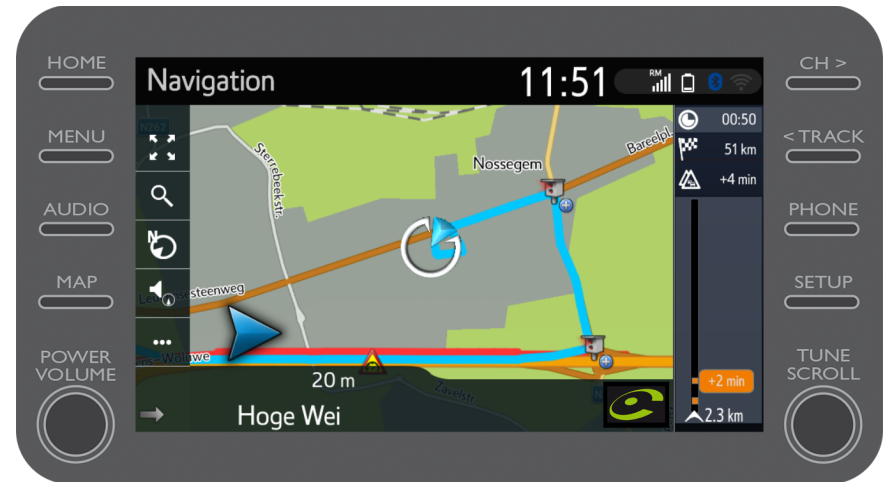
# Using Share to Car: Step 20

The route will be loaded.



# Using Share to Car : Step 21

You can now start driving.





*MyT* | App

Life happens when you connect

*MyT* | Connected  
Services